

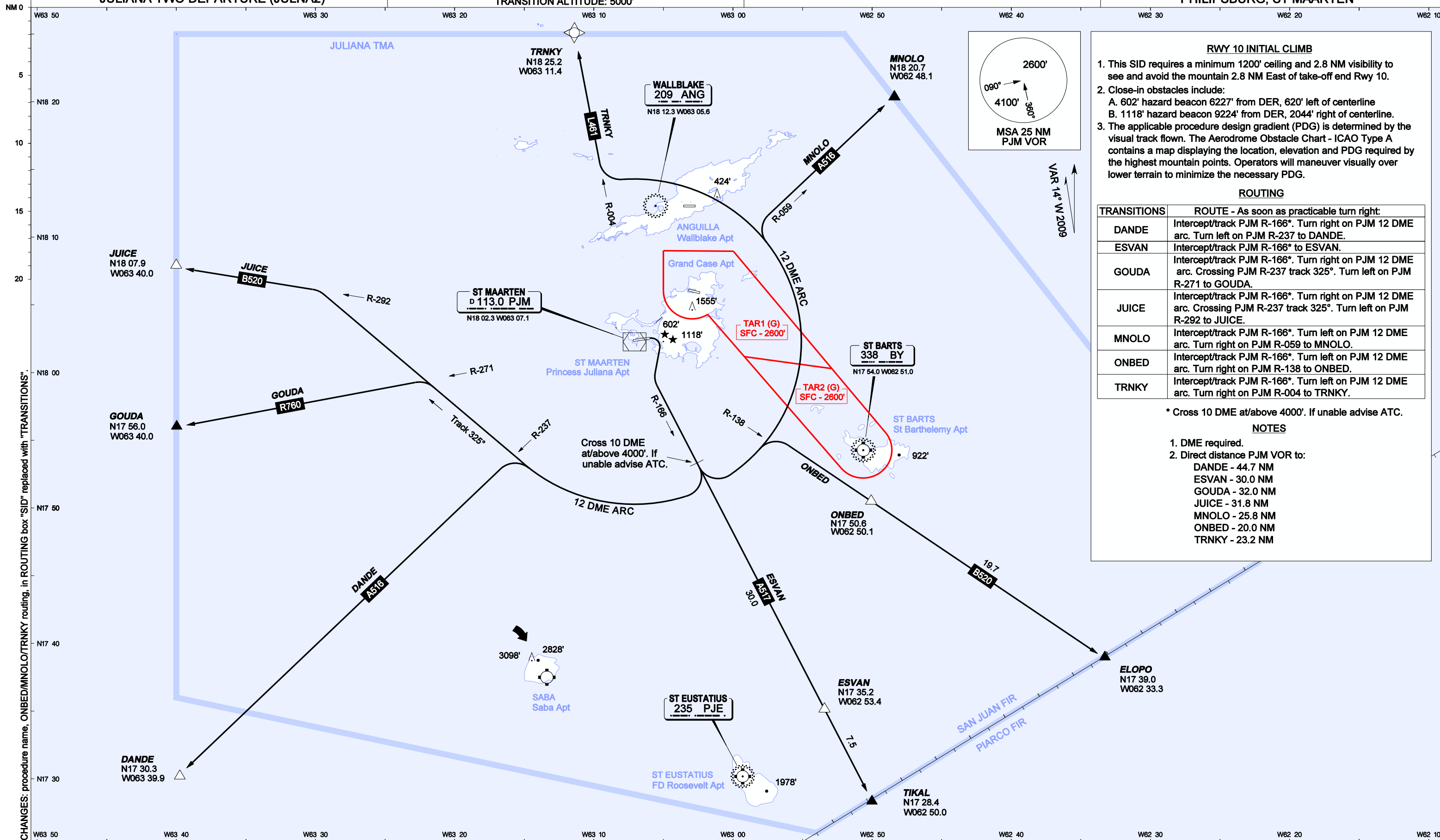
AIP DUTCH CARIBBEAN

SID - ICAO  
JULIANA TWO DEPARTURE (JULNA2)

AERODROME ELEVATION: 14'  
TRANSITION LEVEL: FL65  
TRANSITION ALTITUDE: 5000'

JULIANA APPROACH: 128.95 (PRIMARY), 118.7  
JULIANA TOWER: 118.7

PRINCESS JULIANA INT'L (TNCM)  
PHILIPSBURG, ST MAARTEN



**RWY 10 INITIAL CLIMB**

- This SID requires a minimum 1200' ceiling and 2.8 NM visibility to see and avoid the mountain 2.8 NM East of take-off end Rwy 10.
- Close-in obstacles include:
  - A. 602' hazard beacon 6227' from DER, 620' left of centerline
  - B. 1118' hazard beacon 9224' from DER, 2044' right of centerline.
- The applicable procedure design gradient (PDG) is determined by the visual track flown. The Aerodrome Obstacle Chart - ICAO Type A contains a map displaying the location, elevation and PDG required by the highest mountain points. Operators will maneuver visually over lower terrain to minimize the necessary PDG.

**ROUTING**

TRANSITIONS	ROUTE - As soon as practicable turn right:
DANDE	Intercept/track PJM R-166*. Turn right on PJM 12 DME arc. Turn left on PJM R-237 to DANDE.
ESVAN	Intercept/track PJM R-166* to ESVAN.
GOUDA	Intercept/track PJM R-166*. Turn right on PJM 12 DME arc. Crossing PJM R-237 track 325°. Turn left on PJM R-271 to GOUDA.
JUICE	Intercept/track PJM R-166*. Turn right on PJM 12 DME arc. Crossing PJM R-237 track 325°. Turn left on PJM R-292 to JUICE.
MNOLO	Intercept/track PJM R-166*. Turn left on PJM 12 DME arc. Turn right on PJM R-059 to MNOLO.
ONBED	Intercept/track PJM R-166*. Turn left on PJM 12 DME arc. Turn right on PJM R-138 to ONBED.
TRNKY	Intercept/track PJM R-166*. Turn left on PJM 12 DME arc. Turn right on PJM R-004 to TRNKY.

\* Cross 10 DME at/above 4000'. If unable advise ATC.

**NOTES**

- DME required.
- Direct distance PJM VOR to:
  - DANDE - 44.7 NM
  - ESVAN - 30.0 NM
  - GOUDA - 32.0 NM
  - JUICE - 31.8 NM
  - MNOLO - 25.8 NM
  - ONBED - 20.0 NM
  - TRNKY - 23.2 NM

CHANGES: procedure name, ONBED/MNOLO/TRNKY routing, in ROUTING box "SID" replaced with "TRANSITIONS"